

Acer Projectors with 3D Technology

Quick Guide

© 2021 All Rights Reserved.

Acer Projector Series Quick Guide

Original Issue: 8/2021

Model number: _____

Serial number: _____

Date of purchase: _____

Place of purchase: _____

The Acer projector you have bought has integrated DLP technology.

If you have connected your projector to a computer, please read sections "Using DLP 3D Play technology"

If you have connected your projector to a DVD or Blu-ray player, please read "Watching 3D DVD or Blu-ray content"

Using 3D glasses

DLP 3D glasses are powered. In order to enhance battery life, they turn off after a few minutes of inactivity. Before you can view 3D content, you need to ensure the glasses are turned on. In many cases, there is a power switch on one of the arms that you can press, and an LED that indicates if the glasses are turned on or not.

Note: Refer to the documentation that came with your glasses for instructions how to turn them on and how to change the battery.

Note: Suggest to use Acer DLP 3D glasses to enjoy perfect 3D performance without compatibility issues.

Note: Require DLP-Link 3D glasses and support 96Hz/100Hz/120Hz sync signal. Acer projectors need 3D glasses to support 144Hz sync signal for HDMI 1080P@24P contents.

Using DLP 3D Play technology

Requires DLP 3D glasses.

Before you can enjoy the benefits of the DLP 3D technology, you will need to do the following.

1 Ensure your graphics card supports 3D playback.

Note: Please refer to your graphics card's documentation.

2 Download and install the latest drivers for your graphics card.

Note: Please refer to your graphics card vendor's website for the latest driver version.

3 You should also download a suitable 3D player such as the one available from www.3dtv.at.

Note: You may need to purchase additional software.

4 Ensure you have the correct DLP-compatible 3D glasses.

Setting up a 3D environment

Once you have installed the drivers, you will need to set up the environment.

1 Must set the refresh rate to **120 Hz** on your graphics card for **frame sequential** 3D formats.

If you are viewing Blu-ray 3D content over an HDMI 1.4a or later connection, this will be set automatically.

Note: Blu-ray 3D content over an HDMI 1.4a or later connection is not supported on most of LED projectors.

2 Set 3D Mode to On.

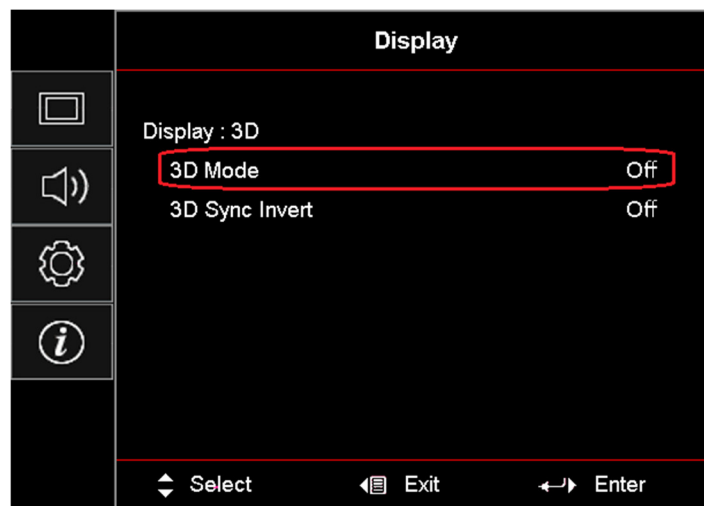


Fig 1. H6800a "3D Mode" Setting

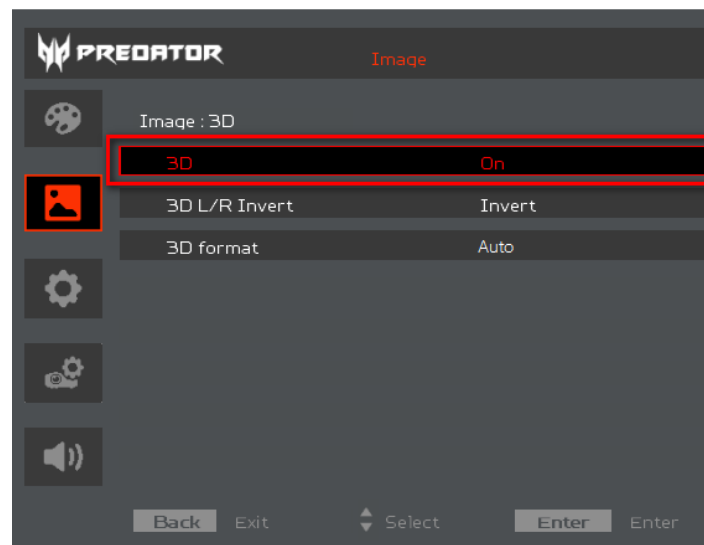


Fig 2. GM712/GD711 "3D Mode" Setting

3 If you find that the 3D content is not displaying properly, try selecting 24P 3D to compatible with 3D glasses.

4 If you find that the 3D content is not displaying properly, try selecting 3D Sync Invert from the projector OSD.



Fig 3. H6800a "3D Sync Invert" Setting

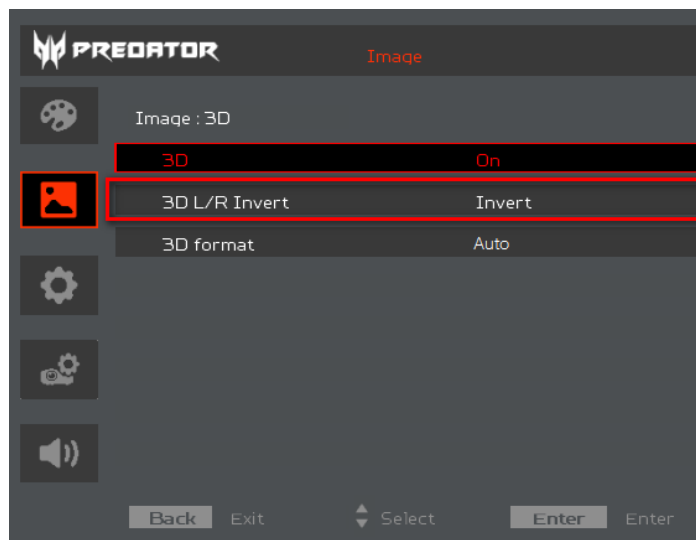


Fig 4. GM712/GD711 "3D L/R Invert" Setting

5 If you find that the 3D content is not displaying properly, try selecting 3D Format from the projector OSD.(GM712/GD711)

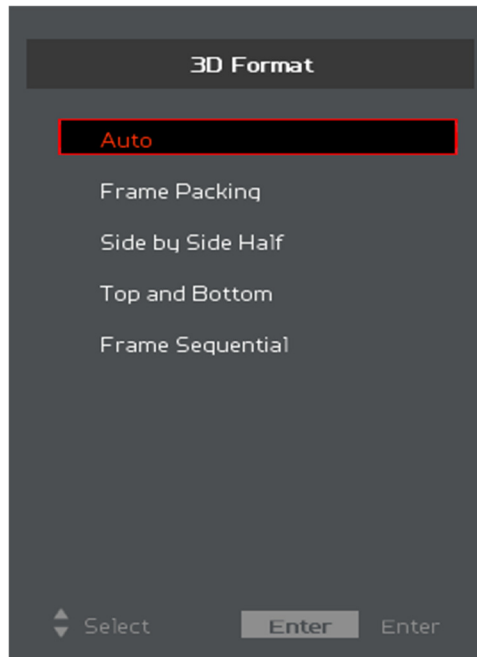


Fig 5. GM712/GD711 "3D Format" Setting

Note:

1. Design and functions are subject to model's specifications and change without notice.
2. H6800a : only support frame sequential and frame packing 3D format.
3. GM712/GD711 : support frame sequential, side-by-side, top-and-bottom and frame packing 3D format.

Watching 3D DVD or Blu-ray content

If you have a DVD or Blu-ray player that supports 3D playback, you can watch 3D DVD content using your Acer 3D-enabled projector. Connect your DVD or Blu-ray player to the projector using any of the available input formats.

To enable and adjust 3D function, follow the procedures in the "Setting up a 3D environment" section on pages 6.

Note: If your DVD or Blu-ray player supports 3D over HDMI 1.4a, check that 3D options are on and the video uses 24p before turning on your projector.